



&



Letter of Agreement
Version: 16 March 2019 - Valid as from: 30 March 2019

Relevant VATSIM position names

ATS Unit	Sector (*)	Callsign	VATSIM code
Paris ACC	Main	Paris Control	LFFF_CTR
Reims ACC	Main	Reims Control	LFEE_CTR
France UAC	Main	France Control	LFUP_CTR
Eurocontrol UAC	West	Eurocontrol West	EURW_FSS
Eurocontrol UAC	Maastricht	Maastricht Radar	EURM_CTR
Brussels ACC	Main/West	Brussels Control	EBBU_(W_)CTR
Brussels ACC	East	Brussels Control	EBBU_E_CTR
Brussels UAC	Main	Maastricht Radar	EBBU_U_CTR
Brussels UAC	Koksy	Maastricht Radar	EDYY_K_CTR
Brussels UAC	Nicky	Maastricht Radar	EDYY_N_CTR
Brussels UAC	Lux	Maastricht Radar	EDYY_L_CTR
Brussels UAC	Olno	Maastricht Radar	EDYY_O_CTR
Luxembourg TMA	Main	Luxembourg Approach	ELLX_APP

(*) Note: During events, sector names may change and are subject to prior coordination.

ATS routes, coordination points, flight level allocation

Flights from Brussels ACC/UAC to Paris ACC/Reims UAC

ATS route	COP	Flight level allocation	Special conditions
(U)N872	MEDIL	Odd flight levels	EBBR / EBMB departures shall be coordinated climbing to FL 240 to pass MEDIL FL 200 or above
(U)Y50	IDOKO	Odd flight levels	Traffic inbound to Paris TMA shall descent to FL 190 by IDOKO
UZ319	MOPIL	All flight levels	Flights departing from EBBR/EBMB and EBAW to a destination within Paris TMA shall remain below FL 195. Traffic inbound to Paris TMA shall descent to FL 260 by MOPIL.
(U)N857	RAPOR	Even flight levels	Flights departing from EBBR/EBMB and EBAW to a destination within Paris TMA shall remain below FL 195. Traffic inbound to Paris TMA shall descent to FL 260 max. by RAPOR ! Caution: Odd flight levels from GIMER
Z110 Overflights only	MMD	Odd flight levels	ELLX departures shall be coordinated from Luxembourg Approach to Paris ACC below FL 135.

Flights from Paris ACC/Reims UAC to Brussels ACC/UAC

ATS route	COP	Flight level allocation	Special conditions
(U)N873	VEKIN	Even flight levels	Only Inbound traffic to EBBR / EBMB and EBAW shall cross ADUTO at FL180 and proceed direct to TULNI or ARVOL whilst descending to FL120
(U)M617	ROBAL	Even flight levels	Traffic with destination EBLG and EHBK, FL 220 max. Only Inbound traffic to EBBR / EBMB and EBAW shall cross ADUTO at FL180 and proceed direct to TULNI or ARVOL whilst descending to FL120
Z110	MMD	Odd flight levels	
UN858	MEDOX	Odd flight levels	

Flights from Brussels ACC/UAC to Reims ACC/UAC

ATS route	COP	Flight level allocation	Special conditions
(U)N852	GTQ	Odd flight levels	ELLX departures shall be coordinated between Luxembourg Approach and Reims ACC.
UT27	GTQ	Odd flight levels	Departures from EBBR/EBAW/EBCV/EBCI and EDDL/EDDK only. This traffic will be coordinated at ROUSY

Flights from Reims ACC/UAC to Brussels ACC/UAC

ATS route	COP	Flight level allocation	Special conditions
(U)N852	GTQ	Even flight levels	ELLX arrivals shall cross the FIR boundary FL130 or below and shall be coordinated with Luxembourg Approach
UN853	SORAL	Even flight levels	ELLX arrivals shall cross the FIR boundary FL130 or below and shall be coordinated with Luxembourg Approach
UM624	ROUSY	Even flight levels	ELLX arrivals shall cross the FIR boundary FL130 or below and shall be coordinated with Luxembourg Approach
UN858	LIPNI	Even flight levels	ELLX arrivals shall cross the FIR boundary FL130 or below and shall be coordinated with Luxembourg Approach Caution: Odd flight levels after RANUX
UM163	LUTAX	Even flight levels	ELLX arrivals shall cross the FIR boundary FL130 or below and shall be coordinated with Luxembourg Approach

Flights to/from regional airports not mentioned in this LoA

Flights to/from regional airports not mentioned in this LoA shall be coordinated between the responsible ATS units.

Delegation of the Responsibility for the Provision of ATS

Delegation of ATS from Paris ACC/Reims UAC to Brussels ACC/UAC

The provision of ATS has been delegated within the following area(s):

1. Cross Border Working Volume (CBWV) 1a

Lateral limits	Straight lines joining the following positions: 51°03'08"N - 001°45'04"E, 51°00'56"N - 002°34'22"E, along the France/Brussels UIR boundary, 50°43'15"N - 002°50'00"E, 50°41'31"N - 002°50'00"E, back to 51°03'08"N - 001°45'04"E
Vertical limits	FL 245 - FL 660
Remarks	This delegation is to be temporarily revoked upon simple request from either the Paris ATS Unit or the Brussels ATS Unit. The requesting party shall state its request to the other party at least 10 minutes prior to taking effect.

2. Cross Border Working Volume (CBWW) 1b

Lateral limits	Straight lines joining the following positions: 50°32'36"N - 003°16'38"E, 50°35'52"N – 003°07'11"E, 50°41'31"N - 002°50'00"E, 50°43'15"N - 002°50'00"E, along the France/Brussels UIR boundary, back to 50°32'36"N - 003°16'38"E
Vertical limits	FL 265 - FL 660
Remarks	This delegation is to be temporarily revoked upon simple request from either the Paris ATS Unit or the Brussels ATS Unit. The requesting party shall state its request to the other party at least 10 minutes prior to taking effect.

3. G1/UL607 Area

Lateral limits	The portion of the Paris FIR/UIR, north of a parallel line 5 NM south of the axis of ATS route UL607/G1 between KOK and KONAN
Vertical limits	FL 115 - FL 245
Remarks	Airspace classification: B: below FL195, C: above FL195

Delegation of ATS from Brussels ACC/UAC to Paris ACC/Reims UAC

Not applicable.

Delegation of ATS from Reims ACC/UAC to Brussels ACC/UAC

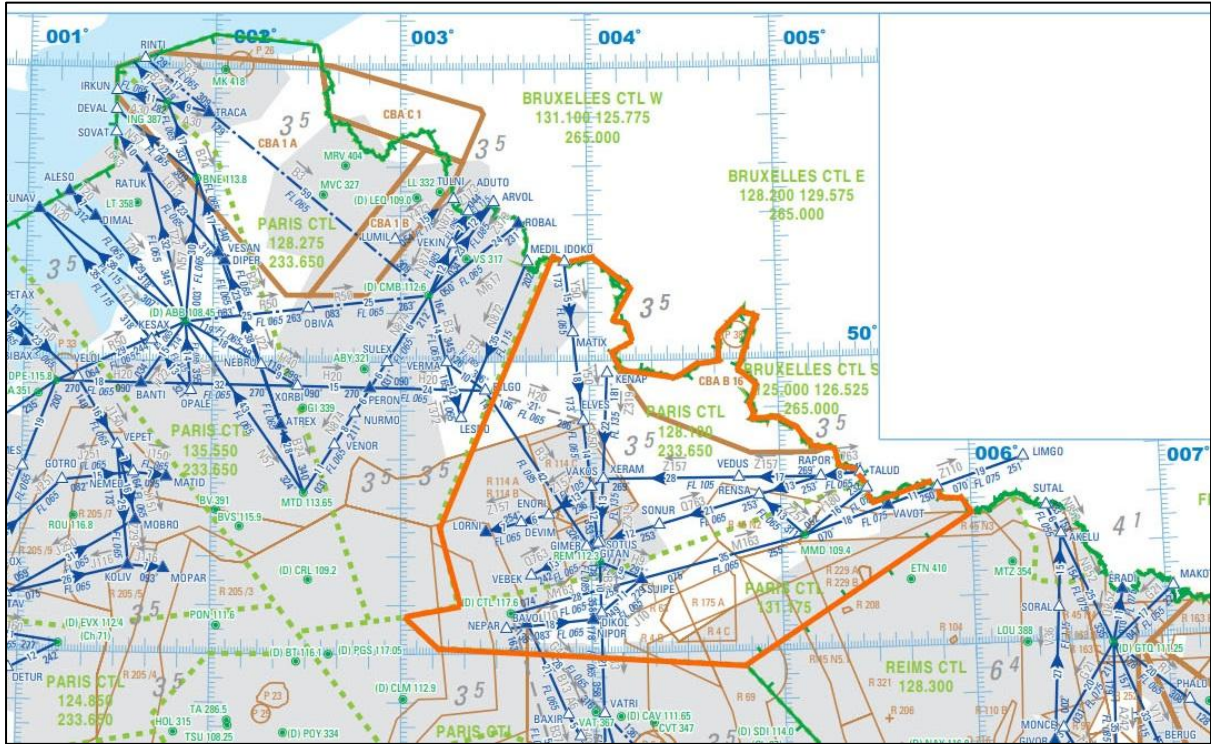
Not applicable.

Delegation of ATS from Brussels ACC/UAC to Reims ACC/UAC

Not applicable.

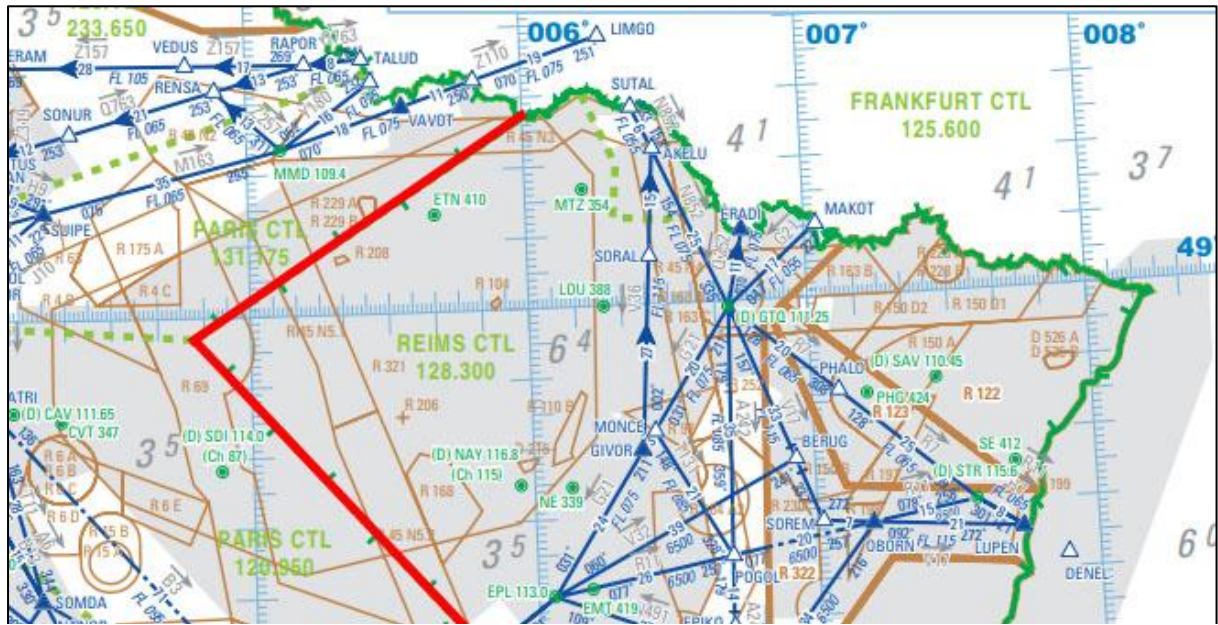
Appendix 1: Airspace

Reims UIR (LFEE)



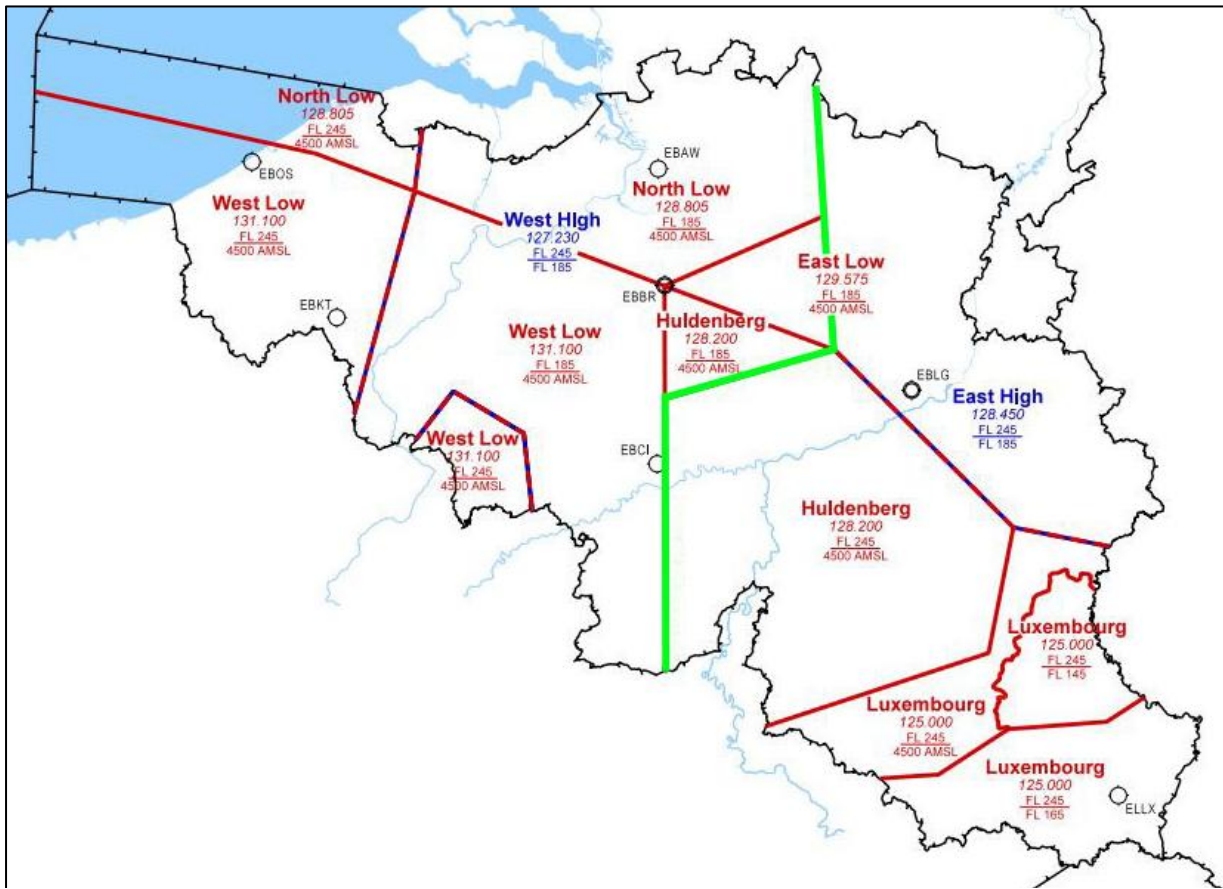
<u>Sector</u>	<u>Vertical limits</u>	<u>Ownership</u>
West of TE + TM	FL195≤x<FL245	1. LFEE_CTR 2. LFFF_CTR
	≥FL245	1. LFEE_CTR 2. LFFF_CTR 3. LFUP_CTR 4. EURW_FSS
TE+TM (indicated in orange) Lateral limits: 50°21'07"N , 003°47'34"E – 49°27'25"N , 003°12'01"E – 49°10'00"N , 003°17'59"E – 49°07'37"N , 003°00'46"E – 49°01'16"N , 003°11'34"E – 48°57'00"N , 004°48'00"E – 49°27'11"N , 006°00'25"E – Border between LU and FR – Border between BE and FR – 50°21'07"N , 003°47'34"E	FL195≤x<FL245	1. LFFF_CTR
	FL245≤x<FL295	1. LFFF_CTR 2. LFUP_CTR 3. EURW_FSS
	≥FL295	1. LFEE_CTR 2. LFFF_CTR 3. LFUP_CTR 4. EURW_FSS
East of TE + TM	FL195≤x<FL245	1. LFEE_CTR 2. LFFF_CTR
	≥FL245	1. LFEE_CTR 2. LFFF_CTR 3. LFUP_CTR 4. EURW_FSS

Paris FIR (LFFF) / Reims FIR (LFEE)



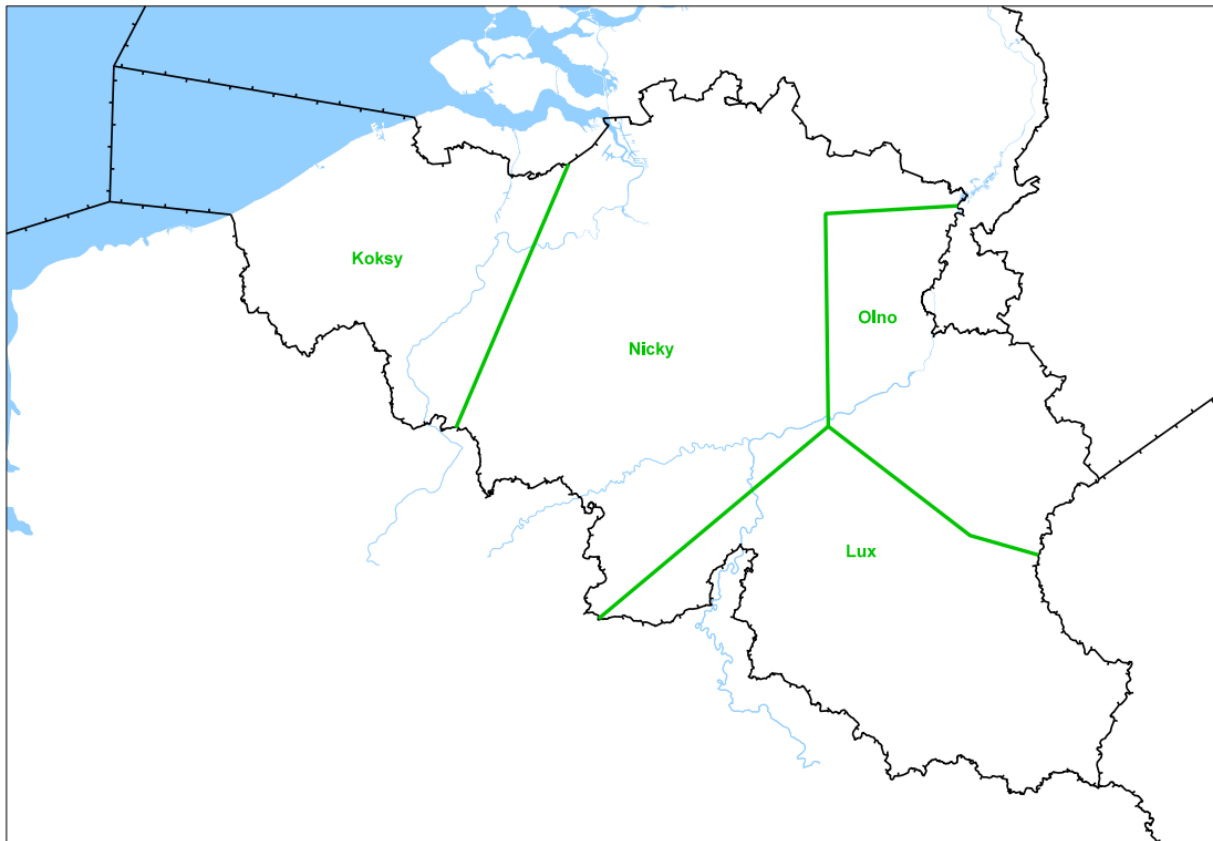
Sector	Vertical limits	Ownership
Paris (west of red line)	≤FL195	1. LFFF_CTR
Reims (east of red line)	≤FL195	1. LFEE_CTR

Brussels FIR (EBBU)



Sector	Vertical limits	Ownership
West (west of green line) <i>Combined sectors: North Low, West Low, West High, Huldenberg (sector up to FL185)</i>	<FL245	1. EBBU_(W_)CTR
East (east of green line) <i>Combined sectors: East Low, East High, Luxembourg, Huldenberg (sector up to FL245)</i>	<FL245	1. EBBU_E_CTR 2. EBBU_(W_)CTR

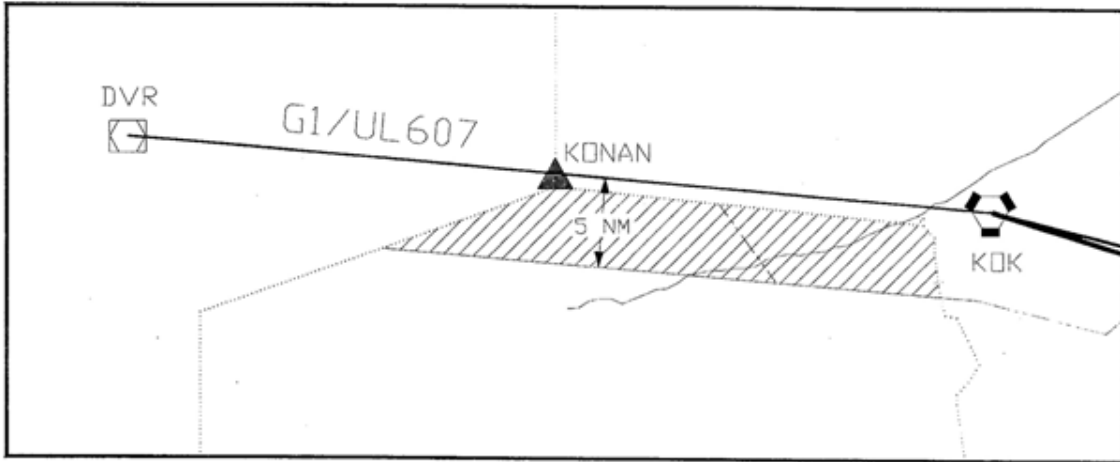
Brussels UIR (EBBU)



<u>Sector</u>	<u>Vertical limits</u>	<u>Ownership</u>
Koksy	≥FL245	<ol style="list-style-type: none"> 1. EDYY_K_CTR 2. EBBU_U_CTR 3. EBBU_(W_)CTR 4. EURM_CTR
Nicky	≥FL245	<ol style="list-style-type: none"> 1. EDYY_N_CTR 2. EBBU_U_CTR 3. EBBU_(W_)CTR 4. EURM_CTR
Olno	≥FL245	<ol style="list-style-type: none"> 1. EDYY_O_CTR 2. EBBU_U_CTR 3. EBBU_E_CTR 4. EBBU_(W_)CTR 5. EURM_CTR
Lux	≥FL245	<ol style="list-style-type: none"> 1. EDYY_L_CTR 2. EBBU_U_CTR 3. EBBU_E_CTR 4. EBBU_(W_)CTR 5. EURM_CTR

Appendix 2: Delegated airspace

G1/UL607 Area



Cross Border Working Volume (CBWV) 1A and 1B

